

[Part 1, Part 2, Part 3, Part 4, Part 5, Part 6](#)

## **Part 4: HOW WELL DOES EVOLUTION THEORY AGREE WITH SCIENTIFIC PRINCIPLES AND DISCOVERY?**

[4-A: Introduction](#)

[4-B: Complexity of the Natural World - Evidence of Supernatural Designer](#)

[4-C: Laws of Science](#)

[4-D: The Marvel of DNA \(Deoxyribonucleic Acid\) Structures](#)

[4-E: Monkey-to-Man Evolution? Missing Evidence of Missing Links](#)

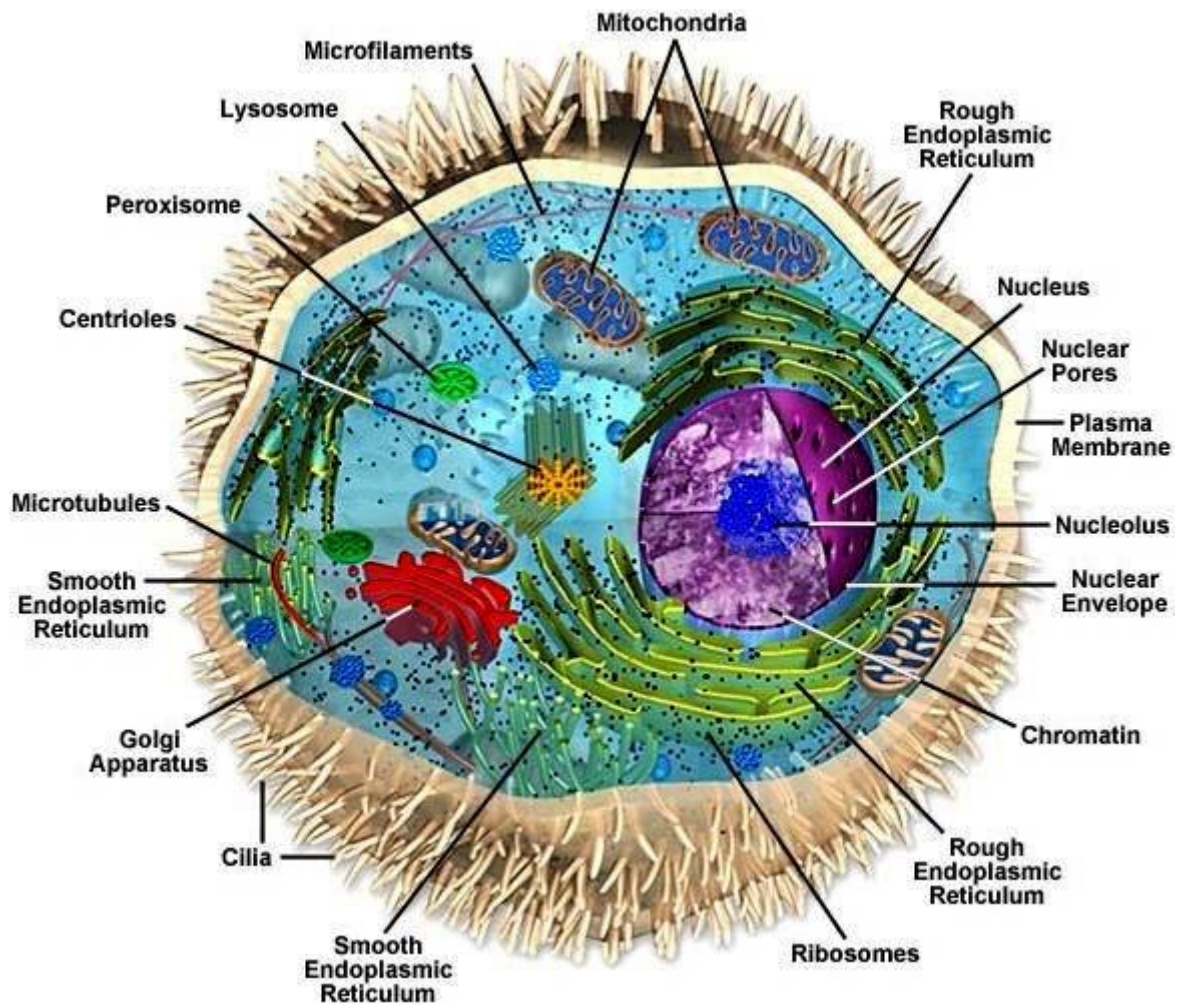
[4-F: Micro Versus Macro Evolution](#)

[4-G: The Problem with Darwinism](#)

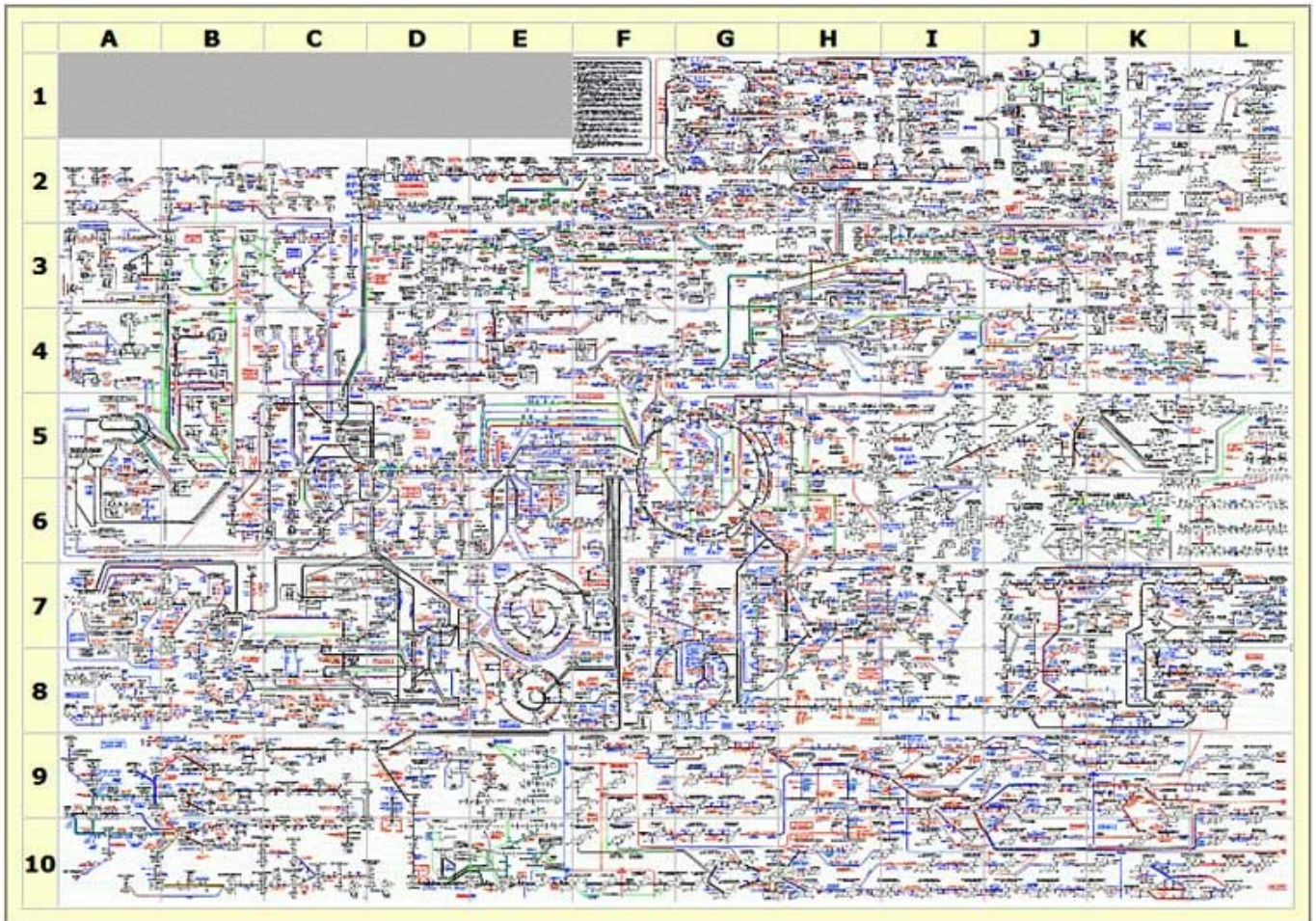
[4-H: In Summary, What Does Science Tell Us about Evolution Theory?](#)







**(Above:) A single cell: as complicated as a factory. (Below:) Biochemistry of the Human Cell: Schematic diagram shows its biochemical/metabolic pathways.**



**When Darwin began advocating his idea that the world could be explained by naturalistic means, the prevailing view of the cell held that it was as simple as a chocolate cupcake; chocolate icing on the outside, chocolate cake on the inside and a creamy filling. It was the kind of thing that one might imagine could arise by accident - either the single cell or the cupcake. However, the cell is not a simple life form containing merely a little protoplasm and a nucleus; it's as complicated as a modern factory - and it can replicate and repair itself. If Darwin had known what we now know about the cell, hopefully he would have scrapped the idea that it could emerge by itself from non-living materials.**

\*\*\*

**Doctor Robert A. Millikan was a renowned American scientist who won the Nobel Prize for Physics. One evening, at a banquet held in his honor, a**

young journalist approached him and said, “Dr. Millikan, although you are undoubtedly a brilliant scientist, a great physicist, I’ve heard rumor that you still cling to the old-fashioned concept of a Creator, that you actually believe in God! Is this true?”

Millikan paused for a moment and then produced an elaborate gold pocket-watch from his vest and said,

**“If you’d say that this watch just put itself together, invented itself, you’d be crazy! And just as there had to be a watchmaker behind the synchronized perfection and order of every watch, so there had to be a Creator behind the perfect synchronized perfection of the Universe!”**



In a similar vein Albert Einstein rejected the idea that random, blind processes could bring about the formation of the natural world:

**“I can’t believe that God plays dice with the universe.”**

The truly great scientists - like Albert Einstein, Galileo, Sir Isaac Newton, Johannes Kepler, and others - all were firm believers in God. The more they learned about the physical world, the more they became convinced that there had to be a Higher Power, a Supernatural Power, a Designer behind the scenes.

\*\*\*

**INTELLIGENT DESIGN  
of the  
Natural World  
Is the Work of an  
  
INTELLIGENT  
DESIGNER  
  
Not  
Accidental or Random  
Processes**

Continue to [4-C: Laws of Science](#)